

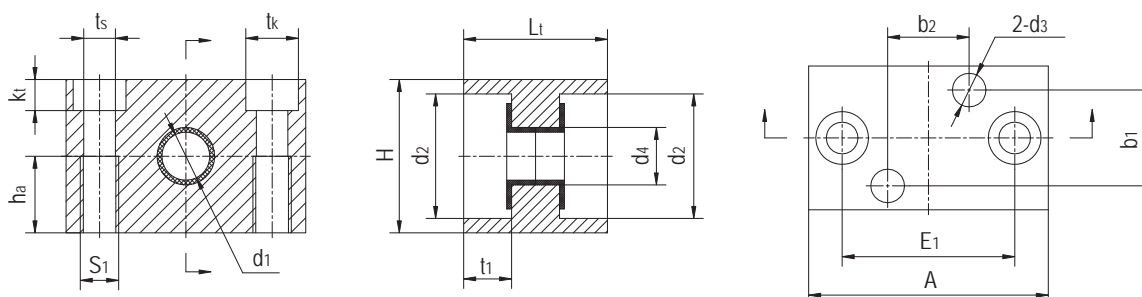
丝杆支撑，固定式 Lead screw supports, fixed bearing side



产品特性 Product features

- 阳极氧化铝轴承座
- 灵活安装丝杠
- 丝杠直径: 10, 18和24 mm
- 通过内置塑料轴承实现自润滑
- Anodized aluminum bearing blocks
- Flexible mounting of the leadscrew
- Leadscrew diameter: 10, 18 and 24 mm
- Lubricant-free through built-in plastic bearing

标准规格 Standard specifications



产品编码 Part No.	d_1 [mm]	A [mm]	H [mm]	E_1 [mm]	L_1 [mm]	k_1 [mm]	t_k [mm]	t_s [mm]	S_1 [mm]	h_3 [mm]	d_2 [mm]	d_4 [mm]	t_1 [mm]	d_3 [mm]	b_1 [mm]	b_2 [mm]	最大轴向载荷 Max. axial static load [N]	重量 Weight [g]
LSS-10-FI	10	50	32	36	30	6.5	11	6.6	M8	16	26	12	10	7	20	17	700	88
LSS-18-FI	18	72	46	54	36	8.6	15	9	M10	23	38	20	15	10	21	27	1600	205
LSS-24-FI	24	94	64	70	50	13	20	13.5	M16	32	47	26	17	12	34	34	2500	525

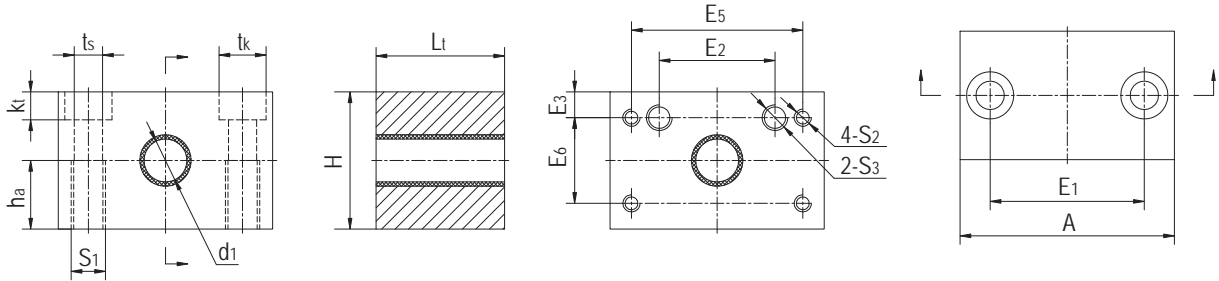
丝杆支撑，浮动式 Lead screw supports, floating bearing side



产品特性 Product features

- 阳极氧化铝轴承座
- 灵活安装丝杠
- 丝杠直径: 10, 18和24 mm
- 通过内置塑料轴承实现自润滑
- Anodized aluminum bearing blocks
- Flexible mounting of the leadscrew
- Leadscrew diameter: 10, 18 and 24 mm
- Lubricant-free through built-in plastic bearing

标准规格 Standard specifications



产品编码 Part No.	d ₁ [mm]	A [mm]	H [mm]	E ₁ [mm]	L _t [mm]	k _t [mm]	t _k [mm]	t _s [mm]	S ₁ [mm]	h _a [mm]	E ₂ [mm]	E ₅ [mm]	E ₃ [mm]	E ₆ [mm]	S ₂ [mm]	S ₃ [mm]	重量 Weight [g]
LSS-10-FL	10	50	32	36	30	6.5	11	6.6	M8	16	27	40	6.5	20	M4	M6	115
LSS-18-FL	18	72	46	54	36	8.6	15	9	M10	23	27	40	13.5	20	M4	M6	295
LSS-24-FL	24	94	64	70	50	13	20	13.5	M16	32	27	40	22.5	20	M4	M6	725

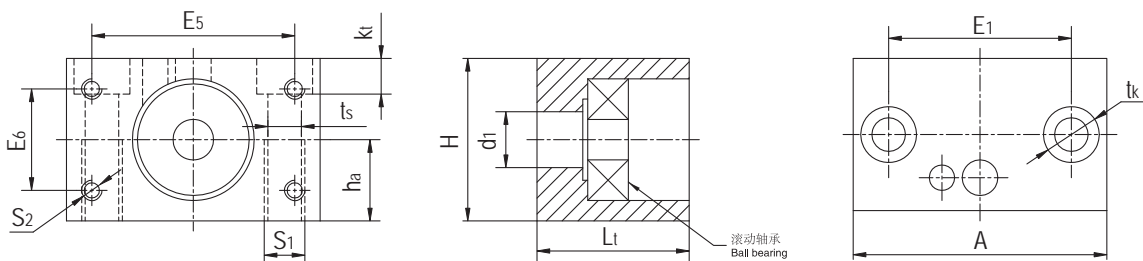
丝杆支撑，滚动轴承 Lead screw supports, ball bearing-faster



产品特性 Product features

- 自润滑、免维护
- 快速连接安装
- 传输高转速
- 低摩擦
- 精准无间隙配合
- Lubricant- and maintenance-free
- Quick connection
- Transmission of high rotation speed
- Low friction
- Accurate and clearance-free

标准规格 Standard specifications



产品编码 Part No.	S ₁ [mm]	S ₂ [mm]	A [mm]	H [mm]	E ₁ [mm]	E ₅ [mm]	E ₆ [mm]	L _t [mm]	k _t [mm]	t _k [mm]	t _s [mm]	d ₁ [mm]	h _a [mm]	最大轴向载荷 Max. axial static load [N]	重量 Weight [g]
LSS-10-BB	M8	M4	50	32	36	40	20	30	6.5	11	6.6	10	16	350	110
LSS-18-BB	M10	M4	72	46	54	48	36	36	8.6	15	9	18	23	1000	265
LSS-24-BB	M16	M4	94	64	70	48	36	50	13	20	13.5	24	32	1500	350